

made  
in  
germany



Ultrasonics.Steam.Ultraclean.



Industry

## Elmasteam 8 basic

Powerful steam jet cleaning technology for industrial applications

- Cleaning, rinsing and drying - all with one device
- Long steam availability with 8 bar steam pressure
- Individually adjustable pressure ranges "soft" and "strong"
- Automatic "Eco-mode" saves costs and energy and is environmentally friendly
- Integrated intelligent decalcification programme
- 3 years warranty\*

# Elmasteam 8 basic

## The environmentally friendly cleaning, rinsing and drying alternative

Large quantities of oil, lubricants, polishing pastes and swarf occur frequently in industry and in workshops due to the processing with machinery. In order to clean the workpieces effectively, pre-cleaning with Elmasteam 8 basic is recommended.

With the selectable **pressure modes „soft“ and „strong“**, the individual regulation of moisture in the steam (**wet or dry steam**) and the strong heating power, the Elmasteam 8 basic is ready for even challenging cleaning tasks.

The individually adjustable **Eco-mode** ensures that the unit closes automatically down to 3 bar operating pressure in order to save energy and cost. Cleaned parts can be easily blown off, cooled or dried with the optional integrated **compressed air function**.



**Simple filling with water**  
via the integrated funnel

**Steam regulation**  
as optional function:

- "wet" - wet steam
- "dry" - dry steam

### Settings and working modes

- Steam outlet:  
Release of remaining pressure
- "Soft-" and "Strong"-modes:  
Individually adjustable pressure modes
- Lock-mode:  
Deactivates the handpiece and the foot pedal during breaks
- Service-modes:  
Integrated decalcification programme, energy-saving Eco-mode, etc.

**Flexible handpiece**  
with 2 integrated functions:

- steam or
- compressed air for drying wet parts  
(optional, if compressed air-function is integrated and connected)

**Compact design**  
Space-saving tabletop units with wall brackets



Watch the Elmasteam 8 basic movie.



**Cleaning with fixed nozzle and foot pedal**  
Ideal for working with both hands or for larger workpieces.



**Cleaning with flexible handpiece**  
Parts can be held securely (also with tweezers) and sprayed all-round quickly and effectively.



**Cleaning in the evaporating dish**  
Moisture and dirt are absorbed and can be easily disposed.

# Elmasteam 8 basic

## Quality and safety with thought-out steam cleaning technology

QUALITY and SAFETY are top priorities at Elma. This means, only tried and tested components and high quality materials are used. For more user safety, Elmasteam 8 basic has an integrated, **automatic Lock-mode**.

Water can be filled via the integrated funnel in the tank or via the rear connection and the integrated pump. **Regular decalcifications increase reliability in operation and the product-**

**life** of the heating. The decalcification programme can be easily started in Service-mode. Occuring sediments can be rinsed out following the operating instructions and using the rinsing set.

**To reduce maintenance efforts and to extend service intervals** when using city water, water filtering cartridges from Brita can also be used and are available as optional accessory.



**Fixed nozzle with foot pedal** for working with both hands

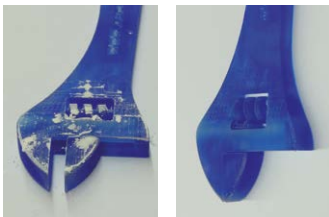
**Clearly arranged filling level and service display**  
Constant and easy control of the operating status

**Digital manometer**  
Display of desired and actual steam pressure values

**Connections on the rear**  
Optional for compressed air and for automatic water filling (works only with integrated, automatic pump)

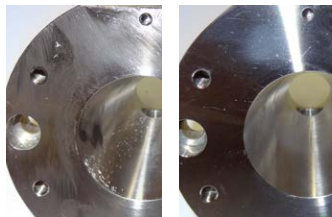
## Application examples before and after cleaning

STL components



Removal of wax

Flange



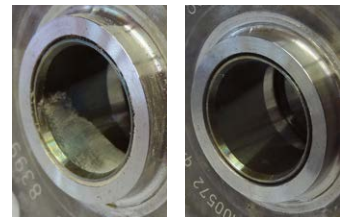
Removal of grease and silicone

Gear drive



Removal of oil and swarf

Gear drive



Removal of polishing paste

With the Elmasteam 8 basic, industrial contaminations such as pickling agents, adhesive wax and other residues can also be gently removed.

# The Elma Cleaning Concept

In the pre-cleaning stage much of the contamination is already removed or solubilized if Elmasteam 8 basic steam cleaning units are used (①). Pre-cleaned parts carry less dirt into the ultrasonic bath. Thus the cleaning cycles will be shorter and the cleaning bath can be used for a longer time (②).

Rinsing with Elmasteam 8 basic and pure water removes remaining particles and residues of the ultrasonic bath (③). Efficient drying of the parts with Elmasteam or the Elma hot-air-dryer (④) is the last step of professional parts cleaning.



## Technical Data

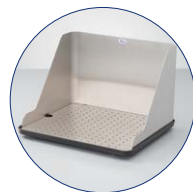
Operating pressure (bar)	8.0	Steam temperature in the tank (°C)	max. 185
Pressure tank volume (l)	5.0	Steam temperature at the nozzle (°C)	max. 160
Max. filling volume (l)	3.8	Dimensions W/D/H (mm)	285 / 350 / 520
Max. power consumption (W)	3120	Weight (kg)	20.0

The scope of delivery includes:



Tweezers · Sieve · Maintenance hose · Rinsing set · Tank cap

Further accessories and optional unit functions:



Evaporating dish



Water filter cartridge  
Brita purity C150 Quell ST



Compressed air  
(optional function)



Canister with  
filling level meter

\*3 years warranty for proper use in accordance with the operating manual. Wear parts are not covered by the warranty.